
TABLE OF CONTENTS

1/4 VIEW

Elevations: 1/8" Scale

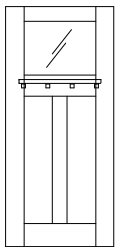
- A312
- A362
- A383
- A387
- A401
- A800

Decorative Hardware

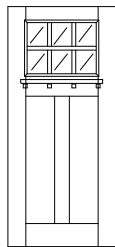
Glass Design Options

Section Details

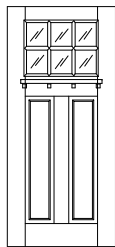
- A312
- A362
- A383
- A387
- A401
- A800



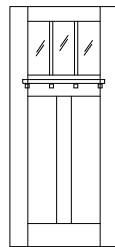
A312



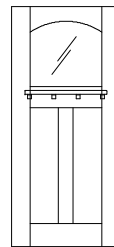
A362



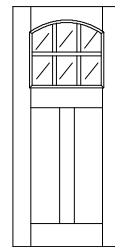
**A362
RAISED PANEL**



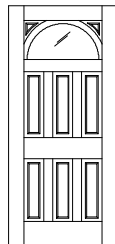
A383



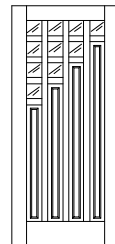
A387



A387



A401



A800

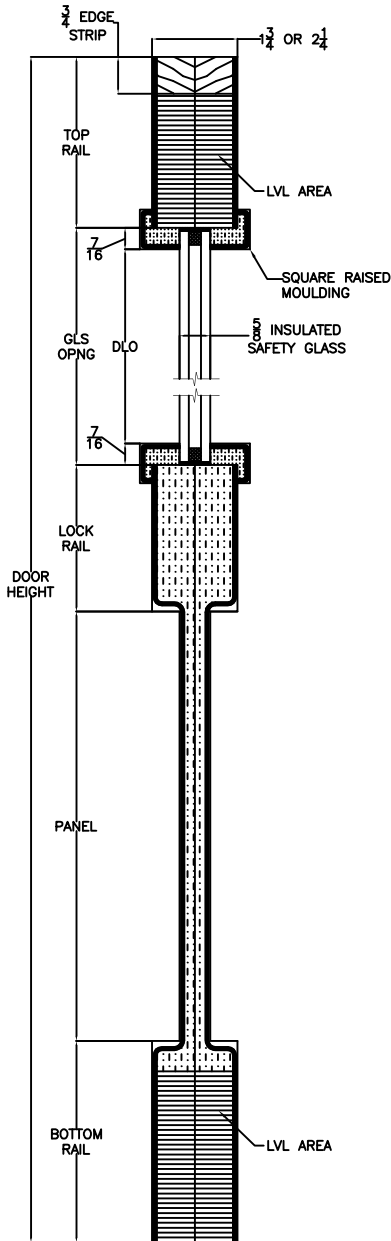
ELEVATION NOTES

Door Size = Book Size Before Prefit
Daylight Opening (DLO) = Visible Glass

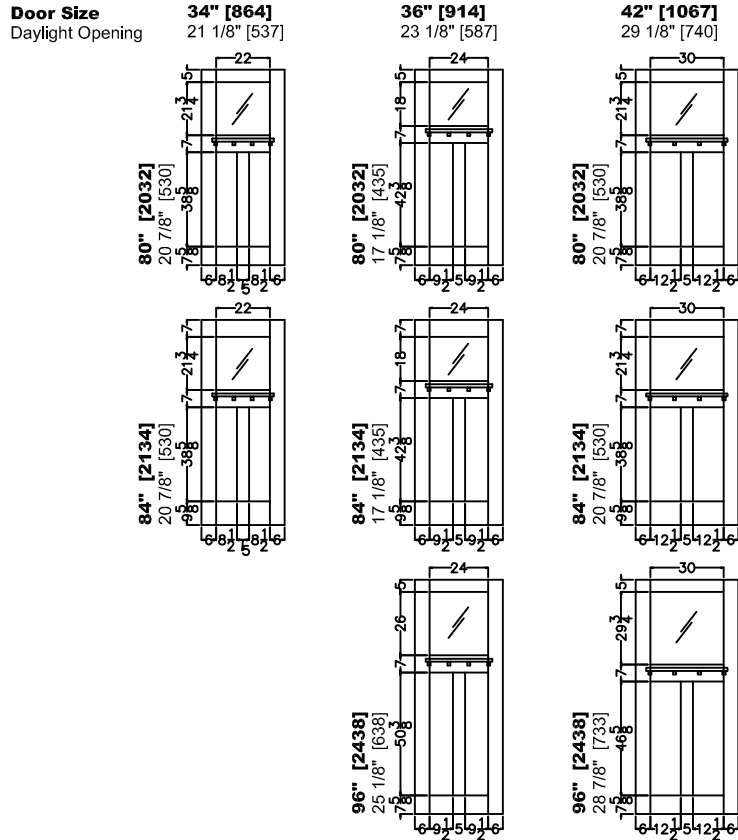
Values in brackets [] are millimeter conversions.
See A312 Glass Detail Sheet for glass options.
Sidelight Match = 1103

DOOR CROSS-SECTION

Moulding Profile = Square
Panel Profile = Flat Craftsman
See A312 Cross Section sheet for more detail.



VERTICAL CROSS SECTION



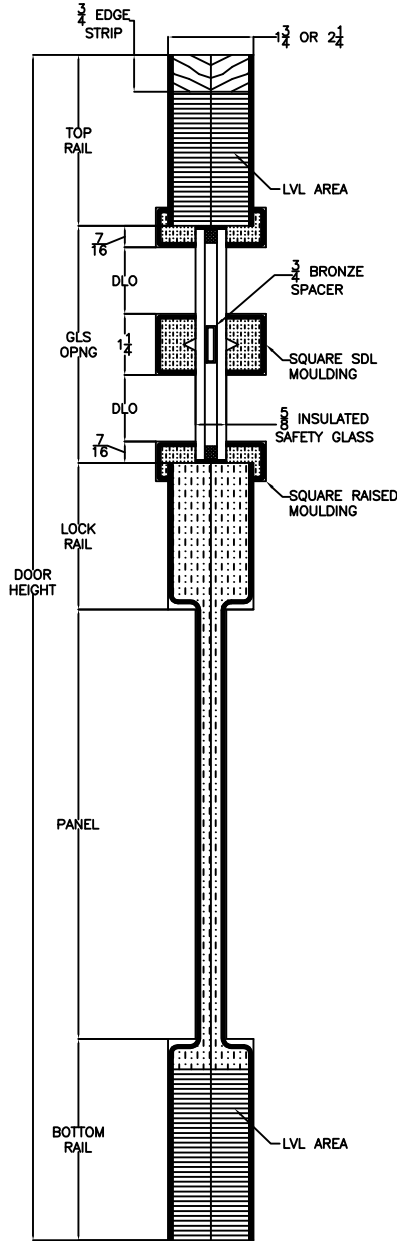
ELEVATION NOTES

Door Size = Book Size Before Prefit
Daylight Opening (DLO) = Visible Glass

Values in brackets [] are millimeter conversions.
Sidelight Match = 1103(Std Layout) or 362

DOOR CROSS-SECTION

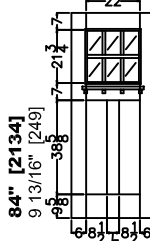
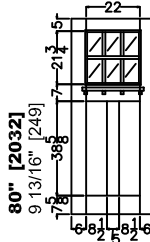
Moulding Profile = Square(Std) or 141
Panel Profile = Flat Craftsman(Std) or 45 Degree Raised
See A362 Cross Section sheet for more detail.



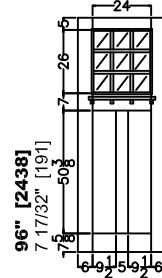
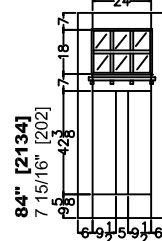
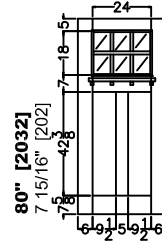
VERTICAL CROSS SECTION
STANDARD LAYOUT

STANDARD LAYOUT

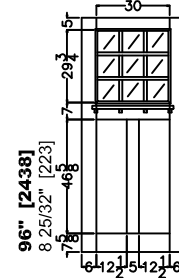
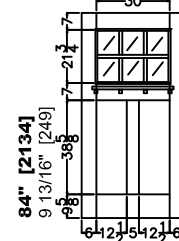
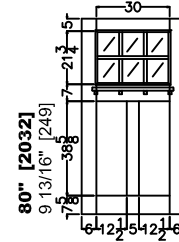
Door Size 34" [864]
Daylight Opening 6 7/32" [158]



Door Size 36" [914]
Daylight Opening 6 7/8" [175]

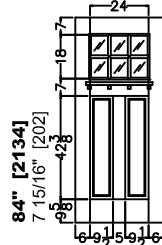
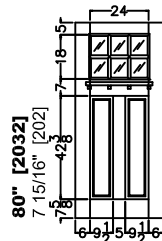


Door Size 42" [1067]
Daylight Opening 8 7/8" [225]



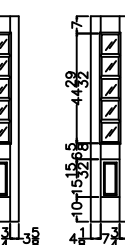
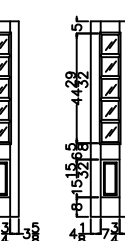
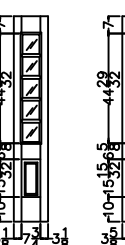
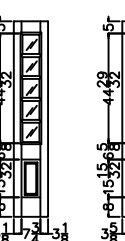
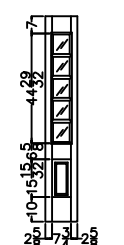
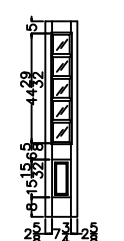
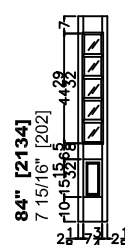
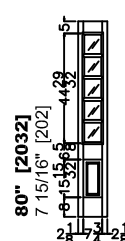
RAISED PANEL

Door Size 36" [914]
Daylight Opening 6 7/8" [175]



RAISED PANEL SIDELIGHT

Sidelight Size 12" [305] 13" [330] 14" [356] 15" [381] 16" [406]
Daylight Opening 6 1/8" [156] 6 1/8" [156] 6 1/8" [156] 6 1/8" [156] 6 1/8" [156]



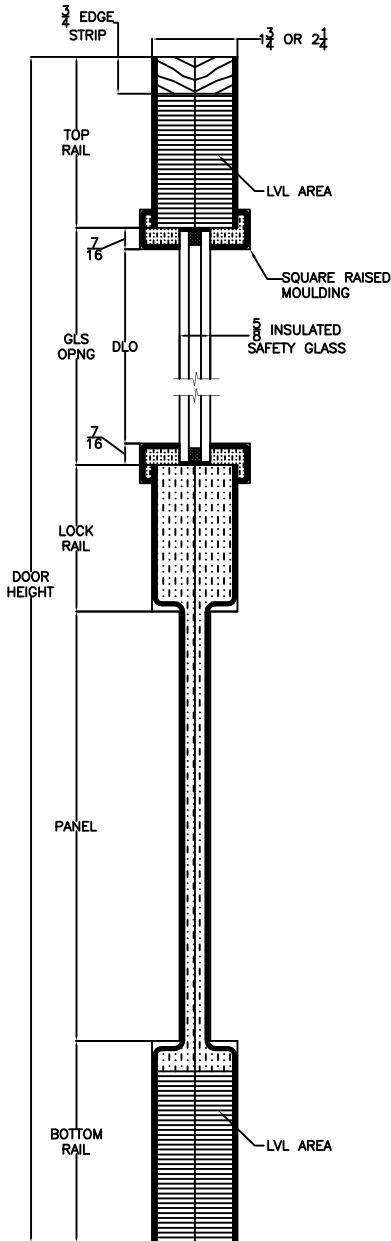
ELEVATION NOTES

Door Size = Book Size Before Prefit
Daylight Opening (DLO) = Visible Glass

Values in brackets [] are millimeter conversions.
See A383 Glass Detail Sheet for glass options.
Sidelight Match = 1103

DOOR CROSS-SECTION

Moulding Profile = Square
Panel Profile = Flat Craftsman
See A383 Cross Section sheet for more detail.

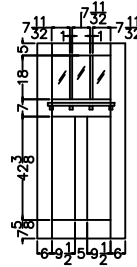


VERTICAL CROSS SECTION

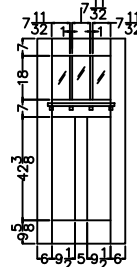
Door Size 32" [813]
Daylight Opening 4 15/32" [114]

36" [914]
6 15/32" [164]

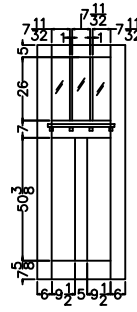
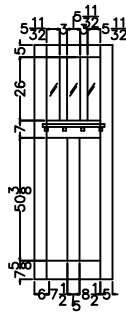
80" [2032]
17 1/8" [435]



84" [2134]
17 1/8" [435]



96" [2438]
25 1/8" [638]



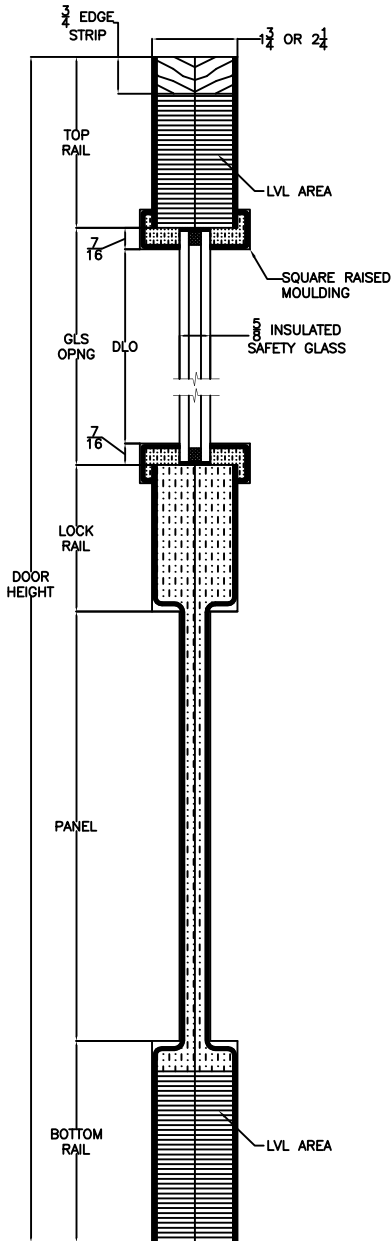
ELEVATION NOTES

Door Size = Book Size Before Prefit
Daylight Opening (DLO) = Visible Glass

Values in brackets [] are millimeter conversions.
See A387 Glass Detail Sheet for glass options.
Sidelight Match = 1103

DOOR CROSS-SECTION

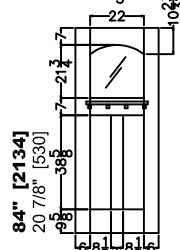
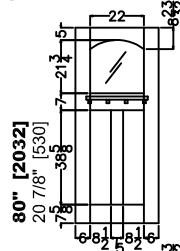
Moulding Profile = Square
Panel Profile = Flat Craftsman
See A387 Cross Section sheet for more detail.



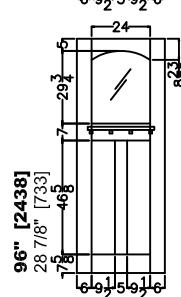
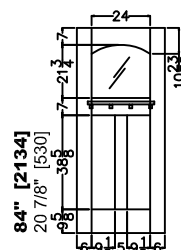
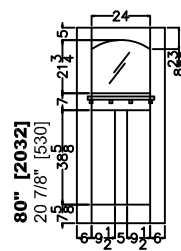
VERTICAL CROSS SECTION

Door Size
Daylight Opening

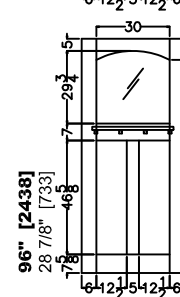
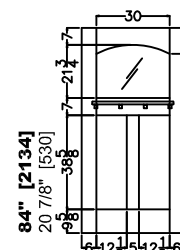
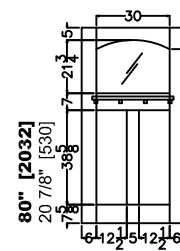
34" [864]
21 1/8" [537]



36" [914]
23 1/8" [587]



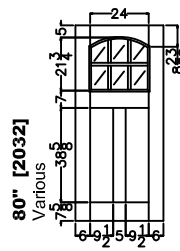
42" [1067]
29 1/8" [740]



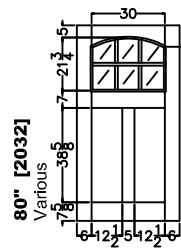
6-LITE OPTION

Door Size
Daylight Opening

36" [914]
6 7/8" [175]



42" [1067]
9 3/32" [231]



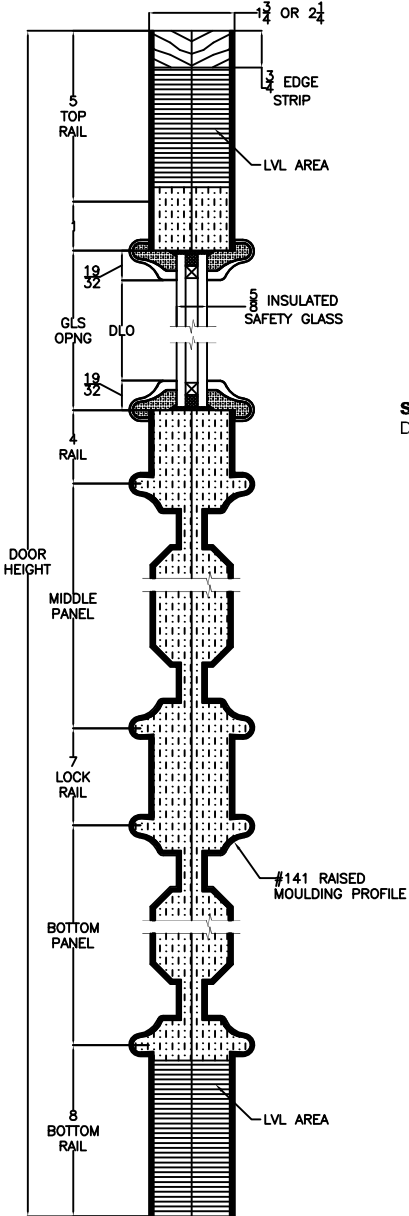
ELEVATION NOTES

Door Size = Book Size Before Prefit
Daylight Opening (DLO) = Visible Glass

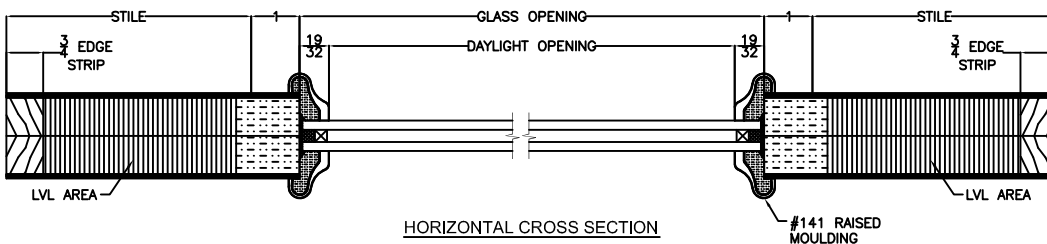
Values in brackets [] are millimeter conversions.
See A401 Glass Detail Sheet for glass options.

DOOR CROSS-SECTION

Moulding Profile = 141
Panel Profile = 45 Degree
See A401 Cross Section sheet for more detail.



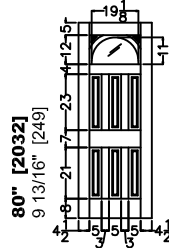
VERTICAL CROSS SECTION



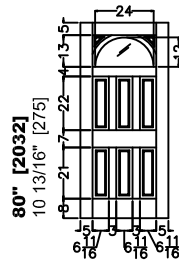
HORIZONTAL CROSS SECTION

Door Size
Daylight Opening

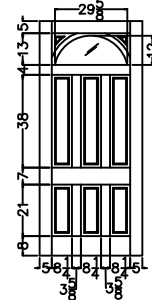
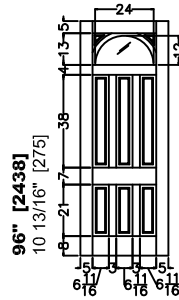
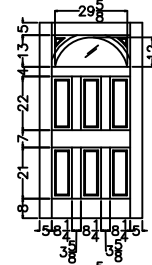
30" [762]
17 15/16" [456]



36" [914]
22 13/16" [579]



42" [1067]
28 7/16" [722]



Sidelight Size
Daylight Opening

12" [305]
7 13/16" [198]

13" [330]
7 13/16" [198]

14" [356]
7 13/16" [198]

15" [381]
9 13/16" [249]

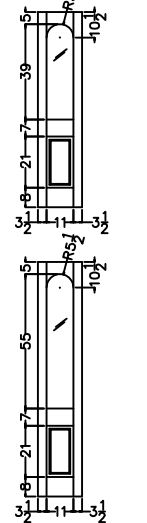
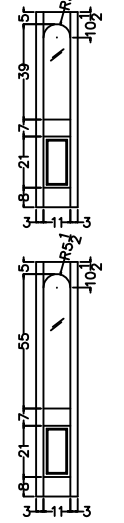
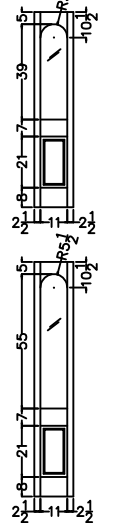
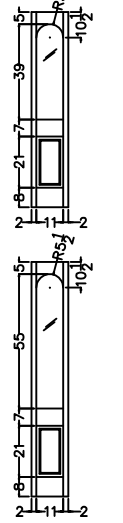
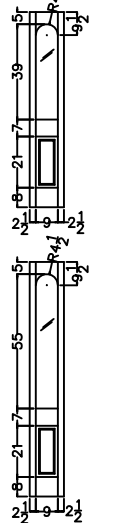
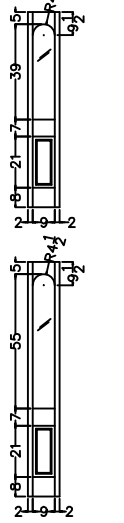
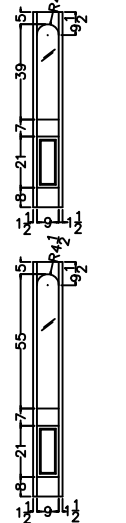
16" [406]
9 13/16" [249]

17" [432]
9 13/16" [249]

18" [457]
9 13/16" [249]

80" [2032]
37 13/16" [960]

96" [2438]
53 13/16" [1367]



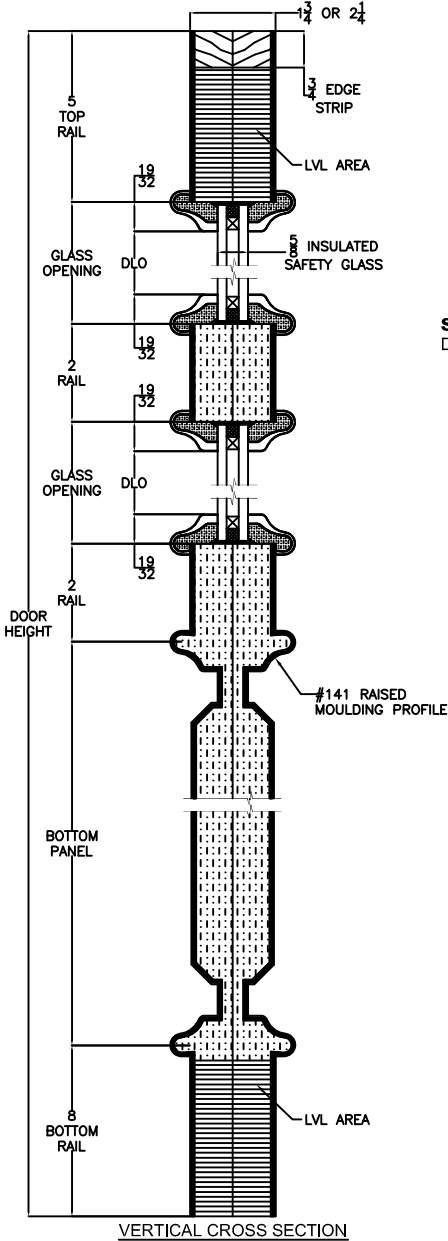
ELEVATION NOTES

Door Size = Book Size Before Prefit
Daylight Opening (DLO) = Visible Glass

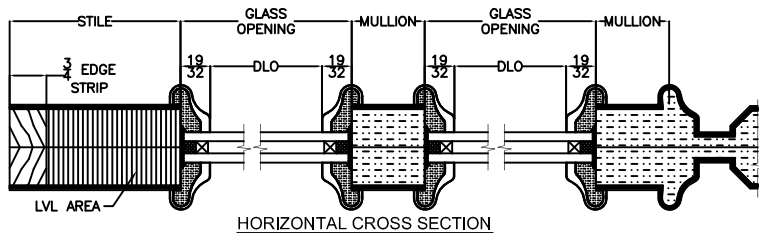
Values in brackets [] are millimeter conversions.

DOOR CROSS-SECTION

Moulding Profile = 141
Panel Profile = 45 Degree
See A800 Cross Section sheet for more detail.



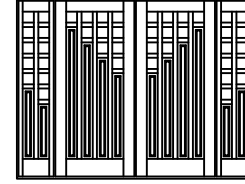
VERTICAL CROSS SECTION



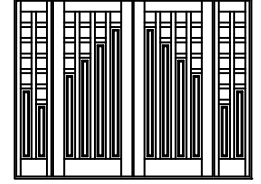
HORIZONTAL CROSS SECTION

DOOR LAYOUTS

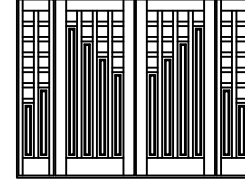
LAYOUT 1



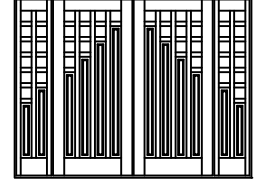
LAYOUT 2



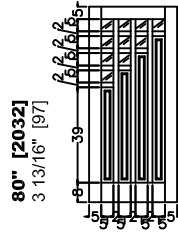
LAYOUT 3



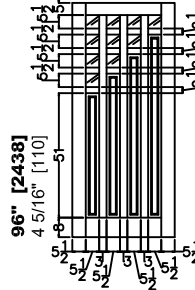
LAYOUT 4



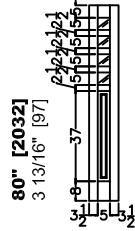
Door Size 36" [914]
Daylight Opening 3 13/16" [97]



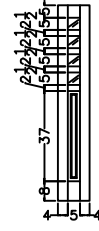
Door Size 42" [1067]
Daylight Opening 4 5/16" [110]



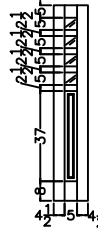
Sidelight Size 12" [305]
Daylight Opening 3 13/16" [97]



Sidelight Size 13" [330]
Daylight Opening 3 13/16" [97]

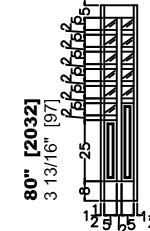


Sidelight Size 14" [356]
Daylight Opening 3 13/16" [97]

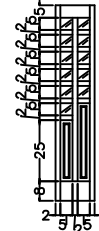


IDEAL SIDELIGHT FOR 3/0 DOOR

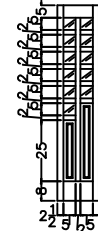
Sidelight Size 15" [381]
Daylight Opening 3 13/16" [97]



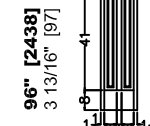
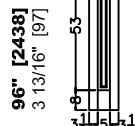
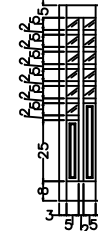
Sidelight Size 16" [406]
Daylight Opening 3 13/16" [97]



Sidelight Size 17" [432]
Daylight Opening 3 13/16" [97]



Sidelight Size 18" [457]
Daylight Opening 3 13/16" [97]



IDEAL SIDELIGHT FOR 3/6 DOOR

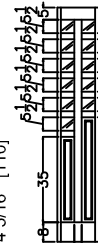
Sidelight Size 17" [432]
Daylight Opening 4 5/16" [110]



Sidelight Size 18" [457]
Daylight Opening 4 5/16" [110]



Sidelight Size 96" [2438]
Daylight Opening 4 5/16" [110]





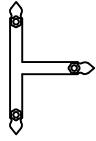
ROUND CLAVOS

Size Options: 1" diameter, 1.75" diameter
Finish Options: Dark Patina, Rust Patina
Material: Composite



DIAMOND CLAVOS

Size Options: 1", 1.75"
Finish Options: Dark Patina, Rust Patina
Material: Composite



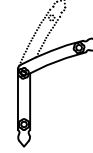
RAIL STRAP

Finish Options: Dark Patina, Rust Patina
Material: Composite



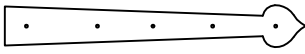
CORNER STRAP

Finish Options: Dark Patina, Rust Patina
Material: Composite



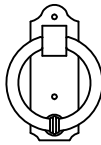
RADIUS STRAP

Finish Options: Dark Patina, Rust Patina
Material: Composite
Adjustable for Segment/Radius Shapes



EXTENDED STRAP

Size: 25" x 3 1/4"
Finish Options: Dark Patina, Rust Patina
Material: Composite



COLONIAL DOOR KNOCKER

Base: 2" Wide x 5 5/8" Tall, Handle: 4" Wide
Finish Options: Dark Patina, Rust Patina
Material: Composite

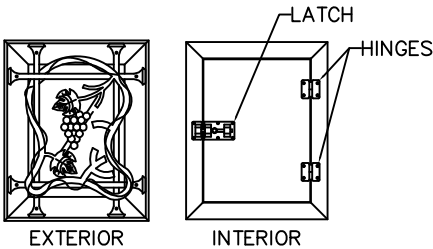


FLEUR de LIS DOOR KNOCKER

Base + Handle: 3 3/4" Wide x 4 7/8" Tall
Finish Options: Dark Patina, Rust Patina
Material: Composite

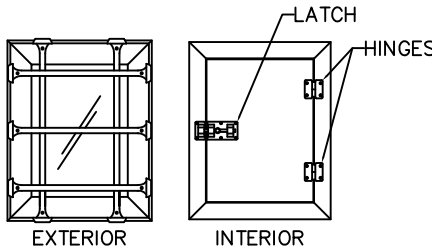
SPEAKEASY/DOOR LIGHT

Glass Options: Clear IG, Clear SG, Bevel IG, Bevel SG, Glue Chip IG,
Low E IG, Rain IG, Reed IG, Frosted IG, Open for Glass
Handing: Will be Handed to Match the Door unless Otherwise Specified
Frame Size: 12" x 15", Daylight Opening: 8" x 11", Actual Glass Size: 8 7/8" x 11 7/8"



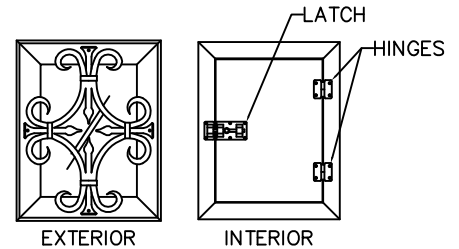
BORDEAUX SPEAKEASY

Hardware Finish Options: Dark Patina, Rust Patina
Material: Composite (Aluminum Hardware)



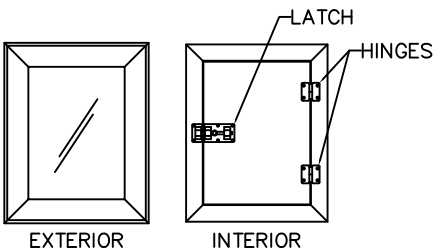
RUSTIC SPEAKEASY

Hardware Finish Options: Dark Patina, Rust Patina
Material: Composite (Aluminum Hardware)



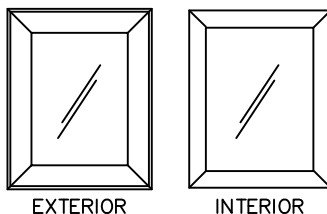
SEVILLE SPEAKEASY

Hardware Finish Options: Dark Patina, Rust Patina
Material: Composite (Aluminum Hardware)



SPEAKEASY (NO GRILLE)

Hardware Finish Options: Dark Patina, Rust Patina
Material: Composite (Aluminum Hardware)



RECTANGLE DOOR LIGHT

Hardware Finish Options: n/a
Material: Composite
Available with All Speakeasy Grilles

INSULATED GLASS

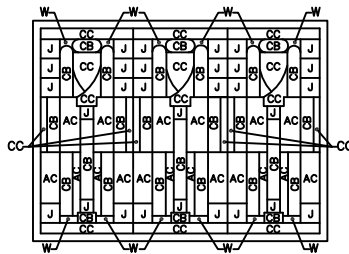
Clear Safety
Clear Beveled
Glue Chip
Low-E
Rain
Reed
Frosted

TRIPLE GLAZED

X - Z

"X" GLASS

Door Size
Glass Size



LEGEND

CB-Clear Bevel
AC-Clear Antique
CC-Clear Crackle
IG-Iridescent Gotta
W-Wispy White
J-Jewel

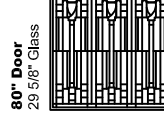
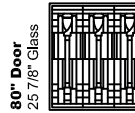
34"
21 7/8" Glass



36"
23 7/8" Glass

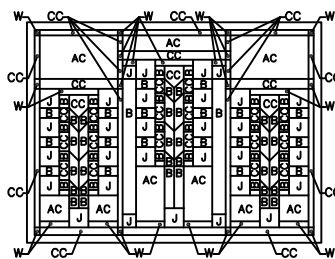


42"
29 7/8" Glass



"Z" GLASS

Door Size
Glass Size



LEGEND

B-Clear Bevel
AC-Clear Antique
CC-Clear Crackle
W-Wispy White
J-Jewel

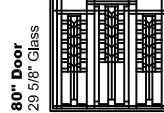
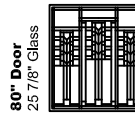
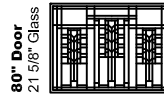
34"
21 7/8" Glass



36"
23 7/8" Glass



42"
29 7/8" Glass



INSULATED GLASS

Clear Safety
Clear Beveled
Glue Chip
Low-E
Rain
Reed
Frosted

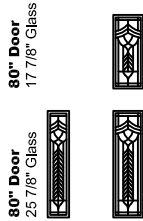
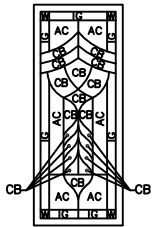
TRIPLE GLAZED

N - X - Z

"N" GLASS

Door Size
Glass Size

32" **36"**
5 7/32" 7 7/32"

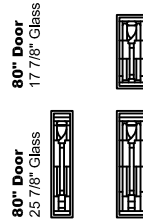
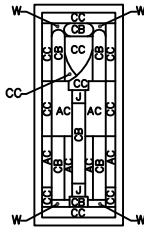


LEGEND
CB-Clear Bevel
AC-Clear Antique
IG-Iridiscent Gotta
W-Wispy White
J-Jewel

"X" GLASS

Door Size
Glass Size

32" **36"**
5 7/32" 7 7/32"

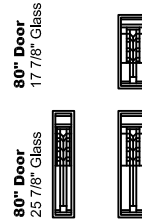
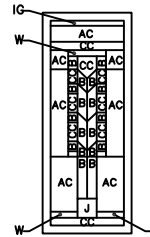


LEGEND
CB-Clear Bevel
AC-Clear Antique
CC-Clear Crackle
W-Wispy White
J-Jewel

"Z" GLASS

Door Size
Glass Size

32" **36"**
5 7/32" 7 7/32"



LEGEND
B-Clear Bevel
AC-Clear Antique
CC-Clear Crackle
IG-Iridiscent Gotta
W-Wispy White
J-Jewel

INSULATED GLASS

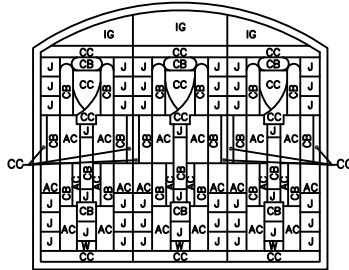
Clear Safety
Clear Beveled
Glue Chip
Low-E
Rain
Reed
Frosted

TRIPLE GLAZED

X - Z

"X" GLASS

Door Size
Glass Size



LEGEND

CB-Clear Bevel
AC-Clear Antique
CC-Clear Crackle
IG-Iridiscent Gotta
W-Wispy White
J-Jewel

34"
21 7/8" Glass



36"
23 7/8" Glass



42"
29 7/8" Glass



80" Door
21 5/8" Glass

80" Door
21 5/8" Glass

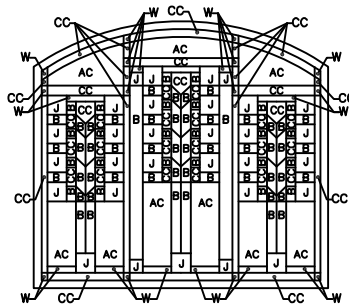
80" Door
21 5/8" Glass

80" Door
29 5/8" Glass

80" Door
29 5/8" Glass

"Z" GLASS

Door Size
Glass Size



LEGEND

B-Clear Bevel
AC-Clear Antique
CC-Clear Crackle
W-Wispy White
J-Jewel

34"
21 7/8" Glass



36"
23 7/8" Glass



42"
29 7/8" Glass



80" Door
21 5/8" Glass

80" Door
21 5/8" Glass

80" Door
21 5/8" Glass

80" Door
29 5/8" Glass

80" Door
29 5/8" Glass

INSULATED GLASS

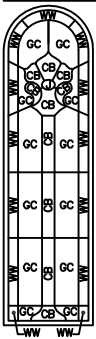
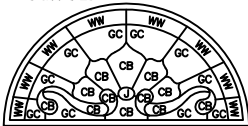
Clear Safety
Clear Beveled
Glue Chip
Low-E
Rain
Reed
Frosted

TRIPLE GLAZED

B - C

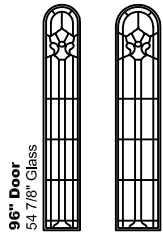
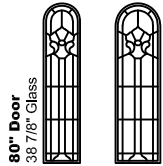
"B" GLASS

Door Size
Glass Size



LEGEND
CB-Clear Bevel
GC-Glue Chip
WW-Clear Water
J-Jewel

12"-14" 8 7/8"
15"-18" 10 7/8"



30" X 80"
19" X 10 7/8"



36" X 80/96"
23 7/8" X 11 7/8"

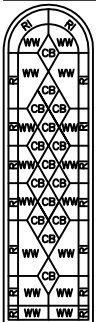
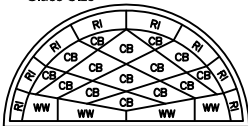


42" X 80/96"
29 5/16" X 11 3/4"



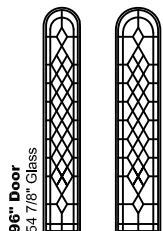
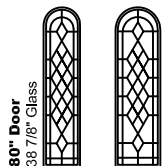
"C" GLASS

Door Size
Glass Size



LEGEND
CB-Clear Bevel
WW-Clear Water
RI-Ripple

12"-14" 8 7/8"
15"-18" 10 7/8"



30" X 80"
19" X 10 7/8"



36" X 80/96"
23 7/8" X 11 7/8"

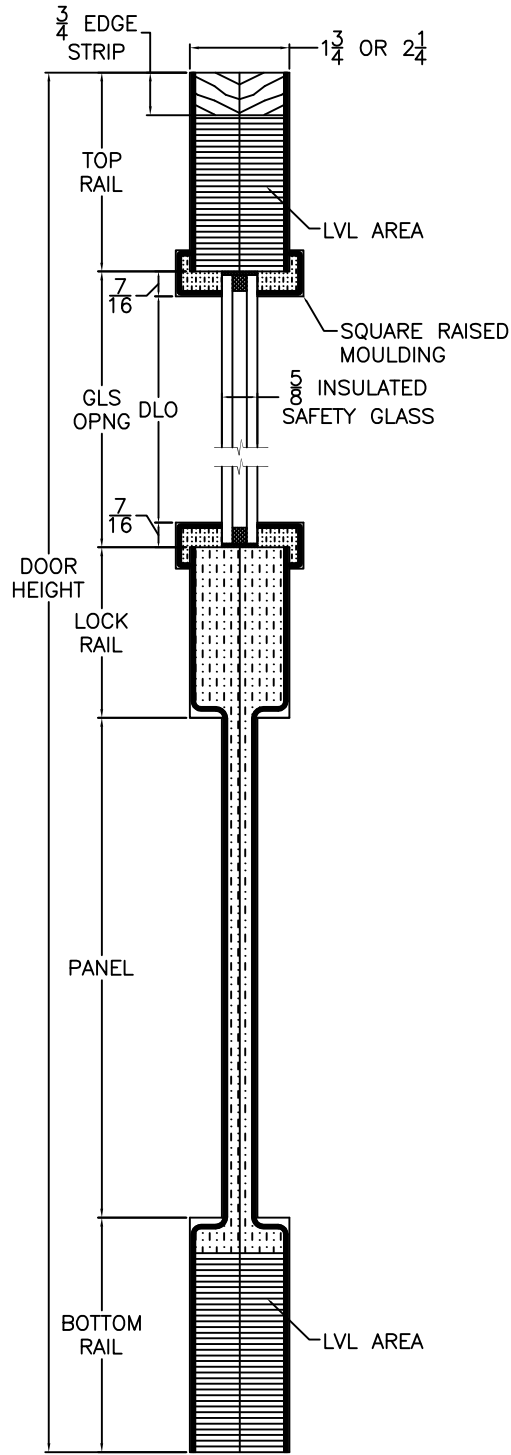
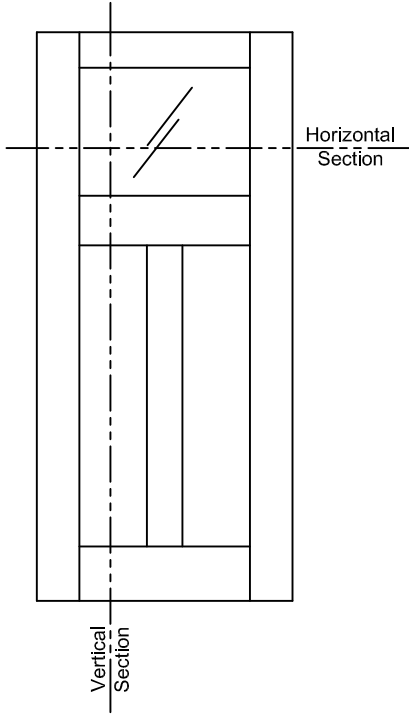


42" X 80/96"
29 5/16" X 11 3/4"

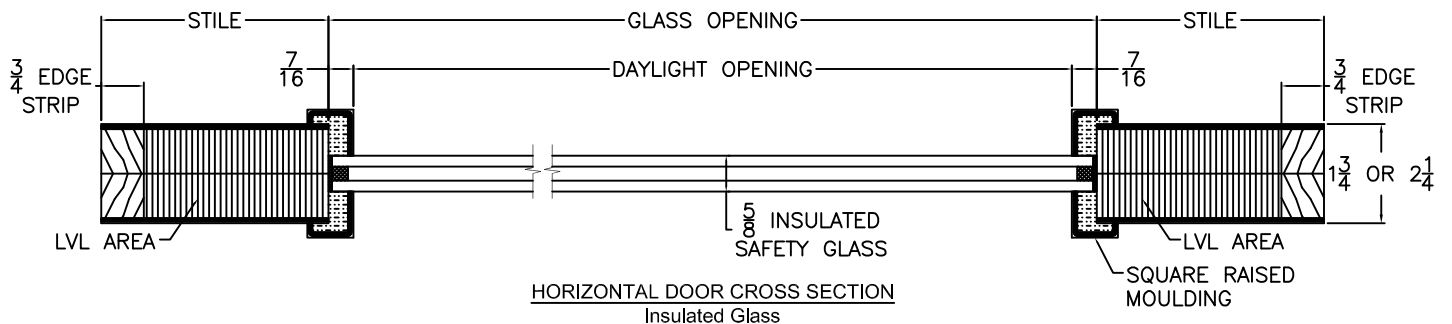
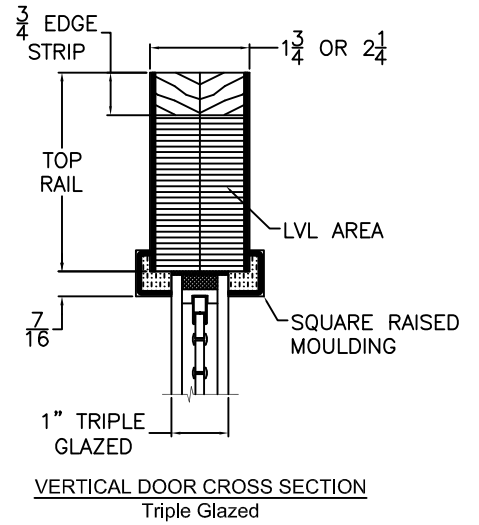


A312 CROSS SECTIONS

Scale: 3" = 1'-0"

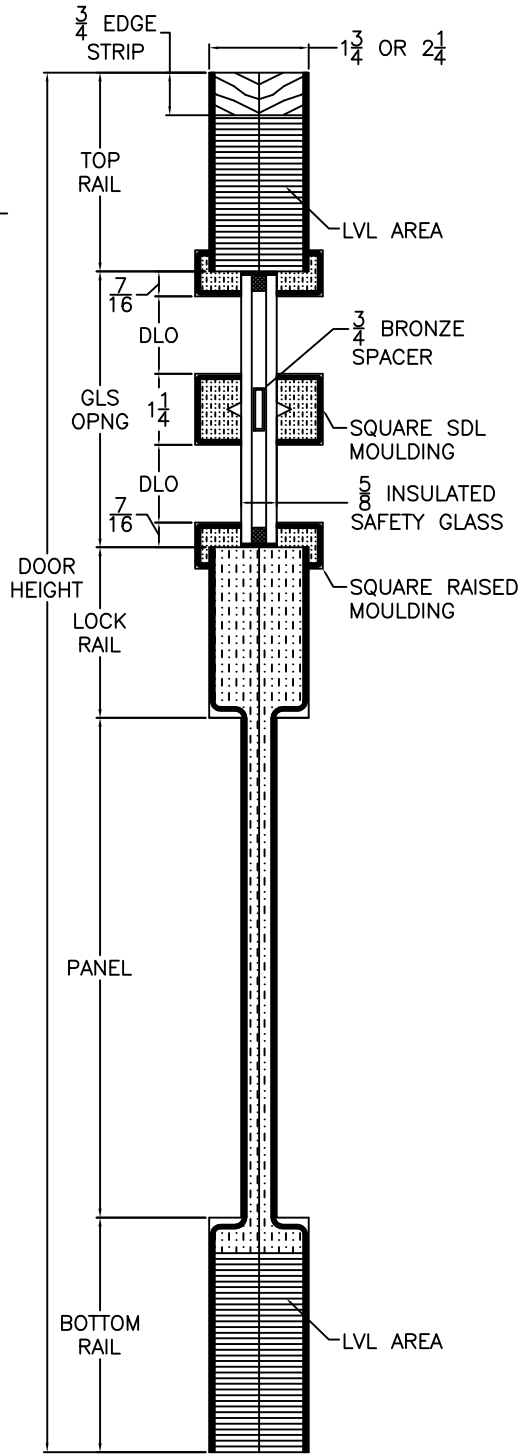
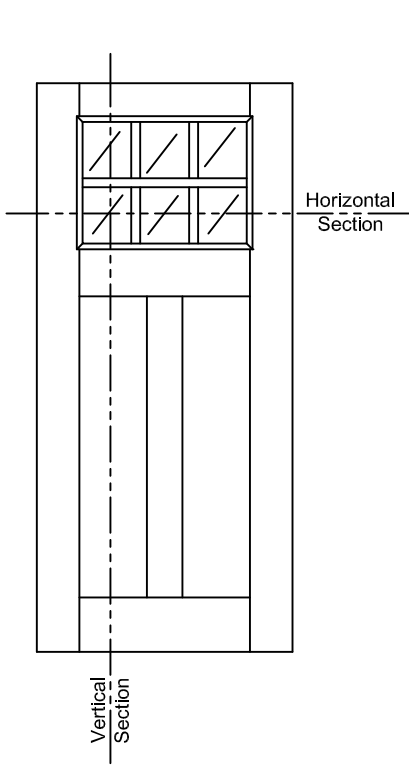


VERTICAL DOOR CROSS SECTION
Insulated Glass

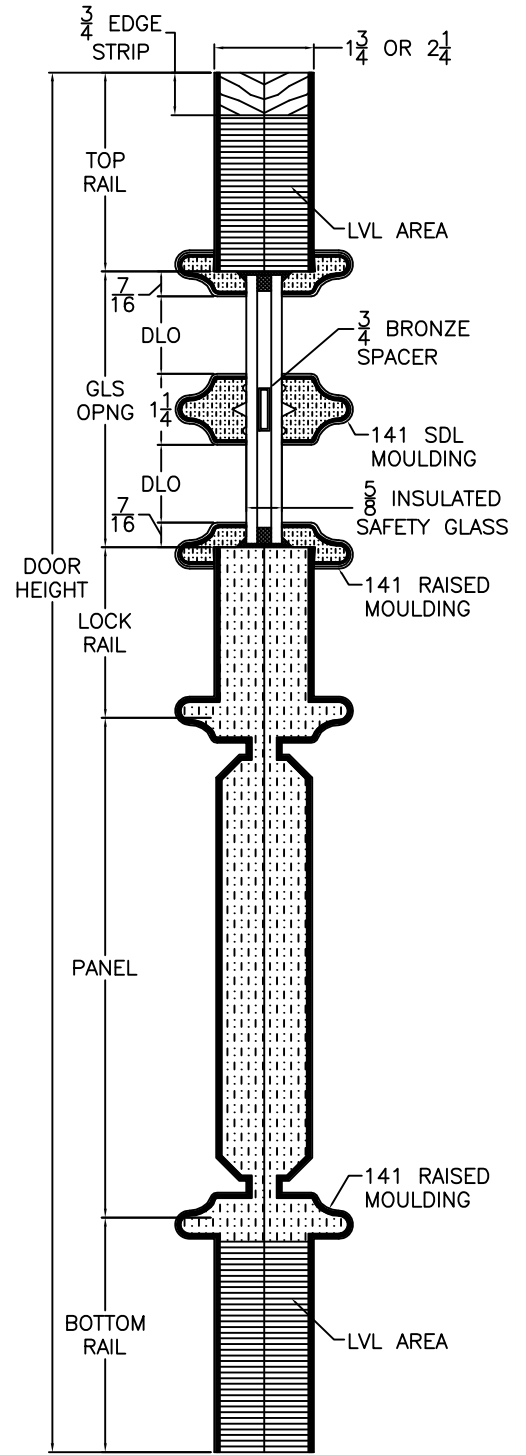


A362 CROSS SECTIONS

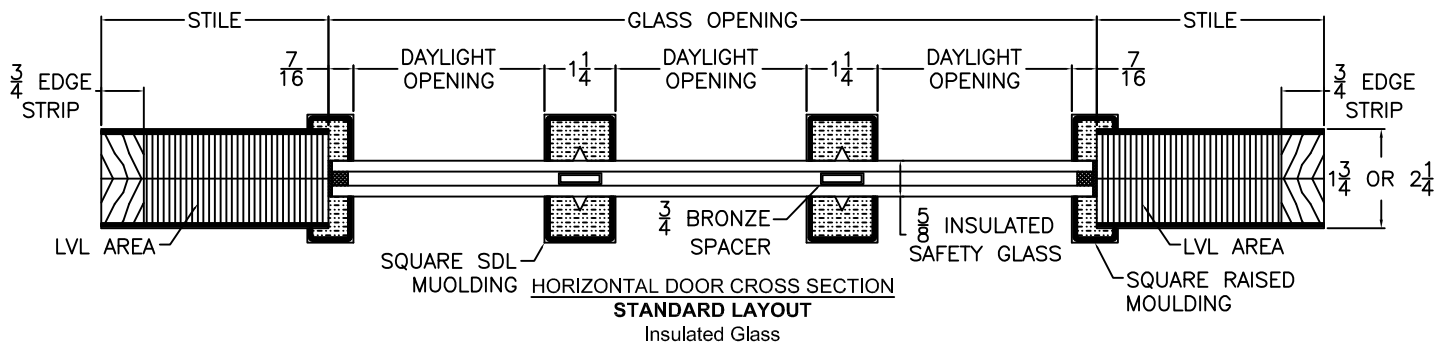
Scale: 3" = 1'-0"



**VERTICAL DOOR CROSS SECTION
STANDARD LAYOUT**
Insulated Glass



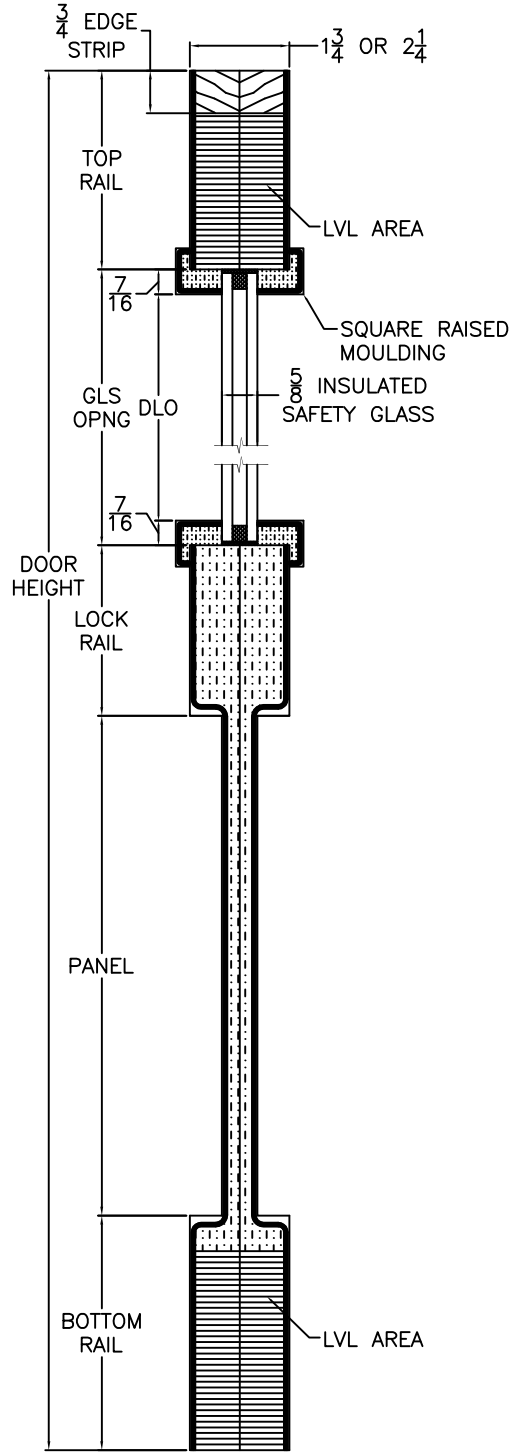
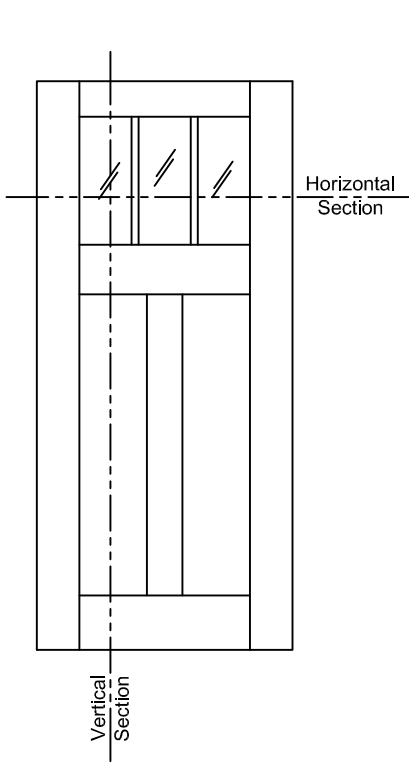
**VERTICAL DOOR/SIDELIGHT CROSS SECTION
RAISED PANEL LAYOUT**
Insulated Glass



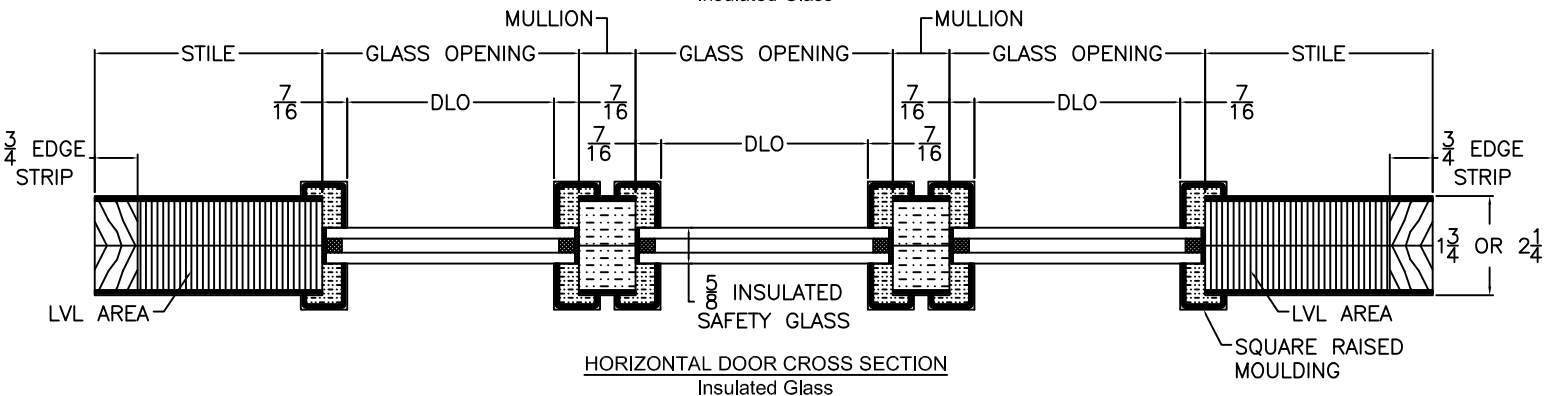
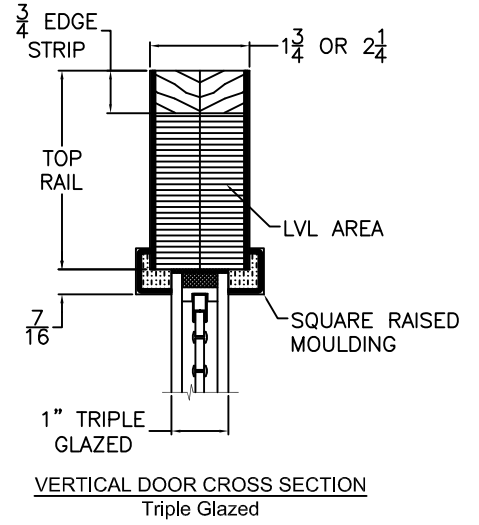
**HORIZONTAL DOOR CROSS SECTION
STANDARD LAYOUT**
Insulated Glass

A383 CROSS SECTIONS

Scale: 3" = 1'-0"

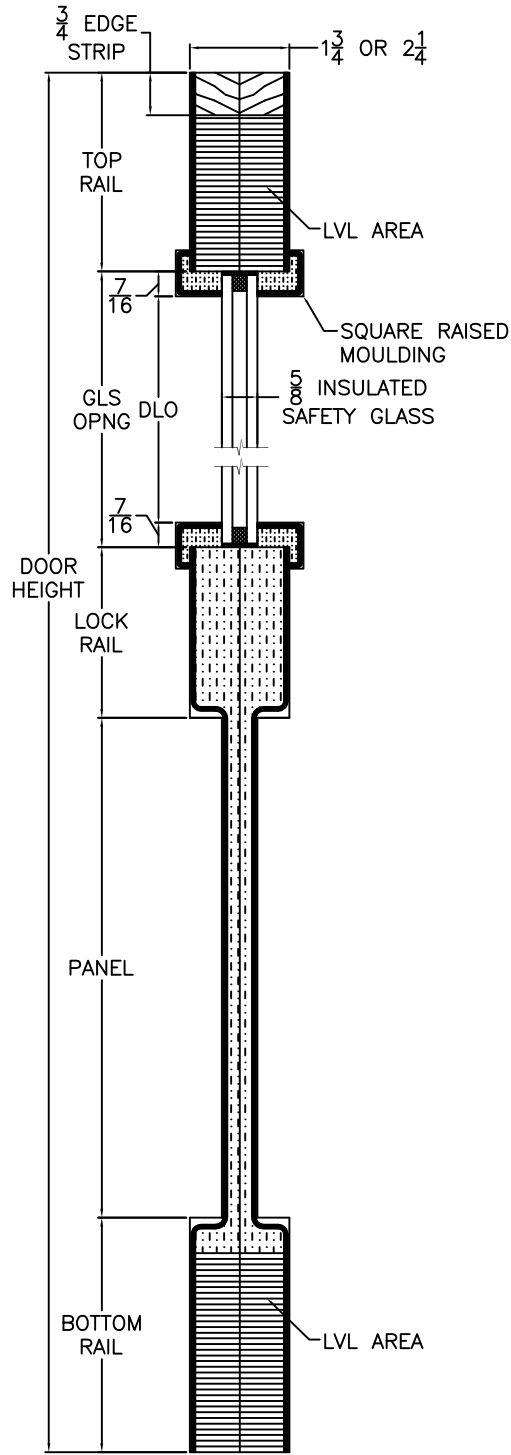
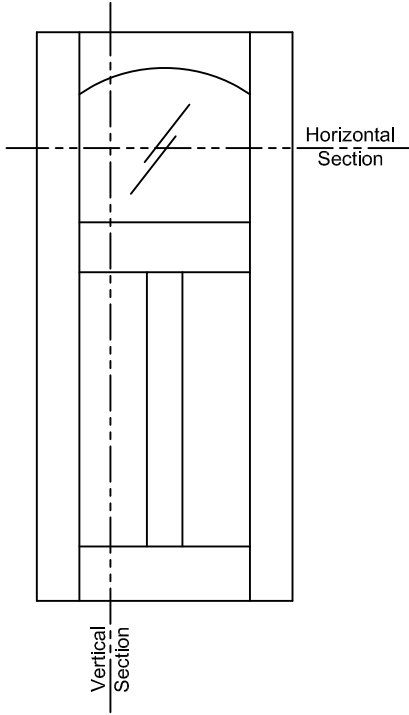


VERTICAL DOOR CROSS SECTION
Insulated Glass

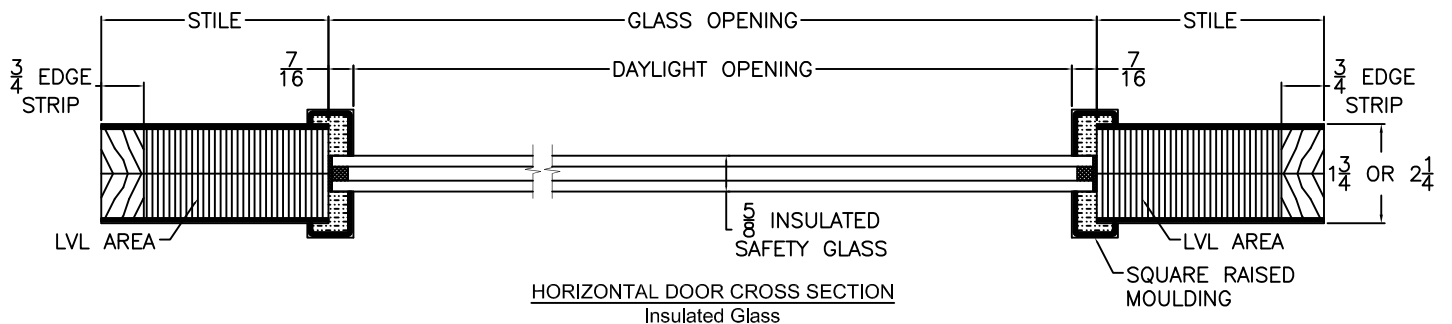
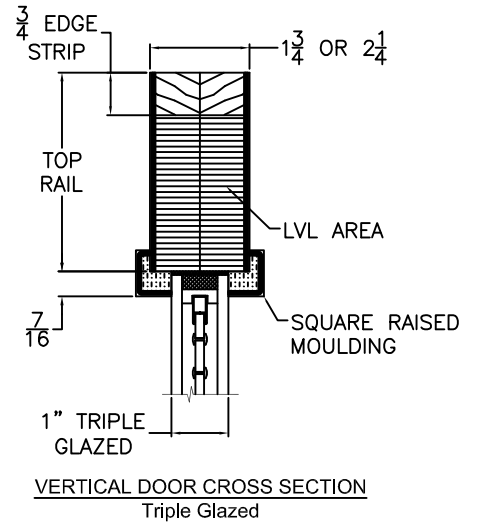


A387 CROSS SECTIONS

Scale: 3" = 1'-0"

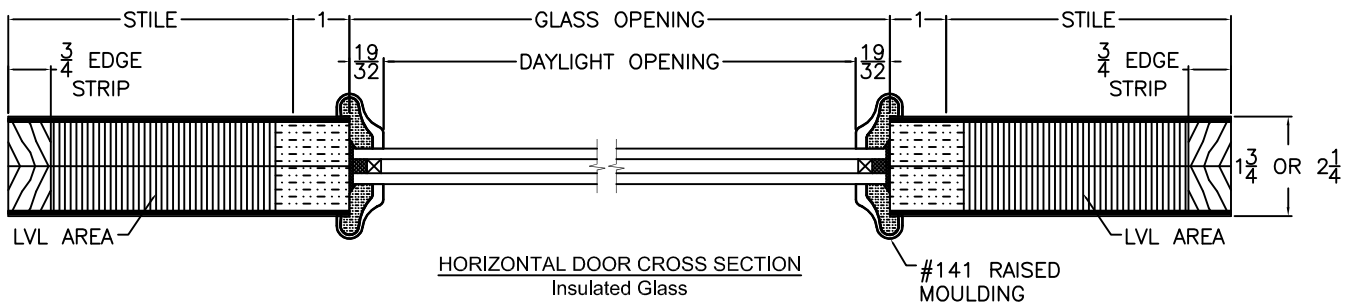
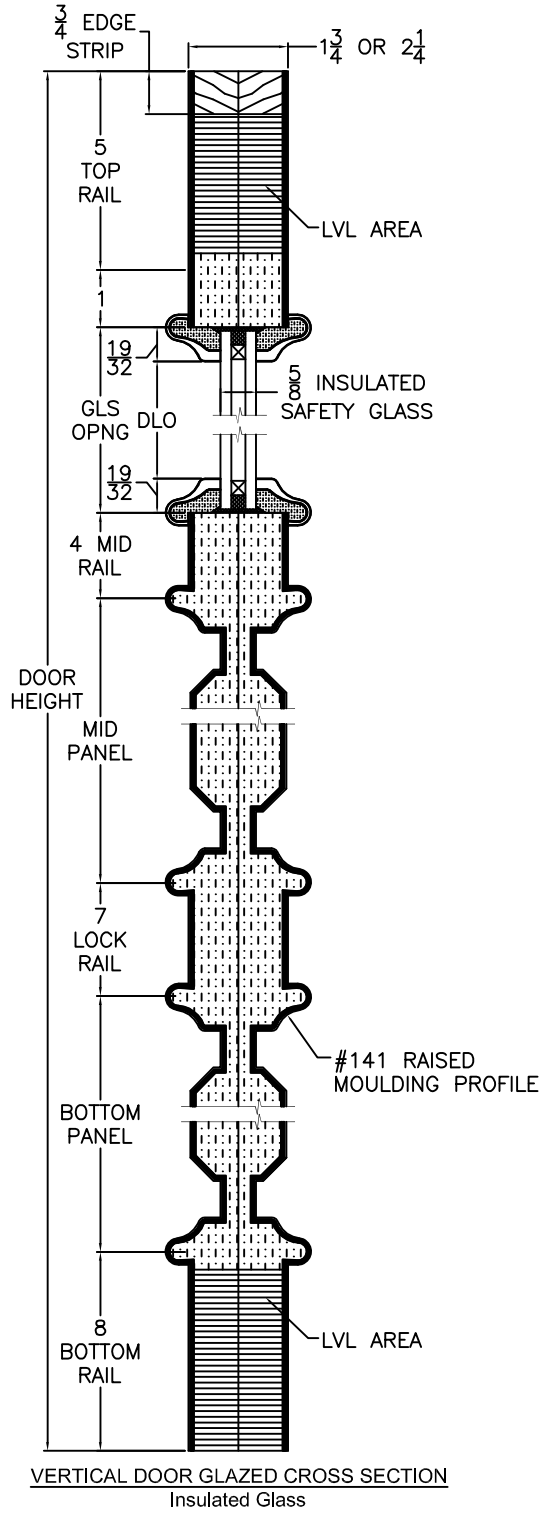
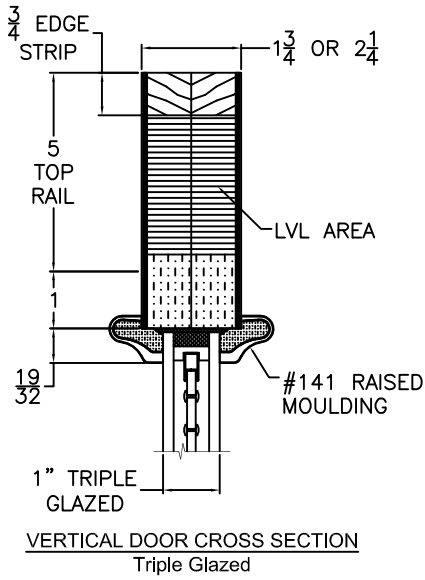
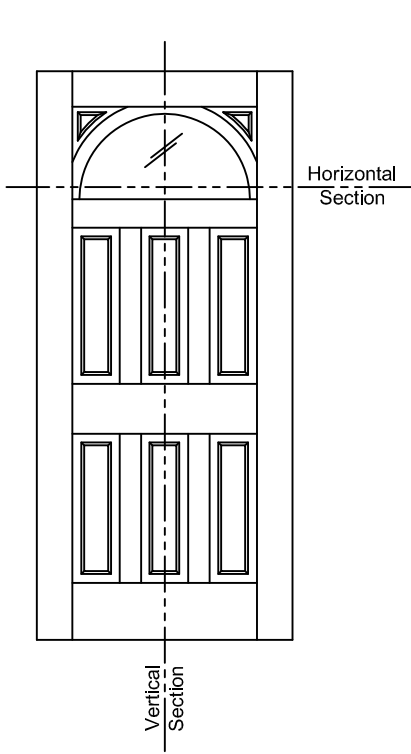


VERTICAL DOOR CROSS SECTION
Insulated Glass



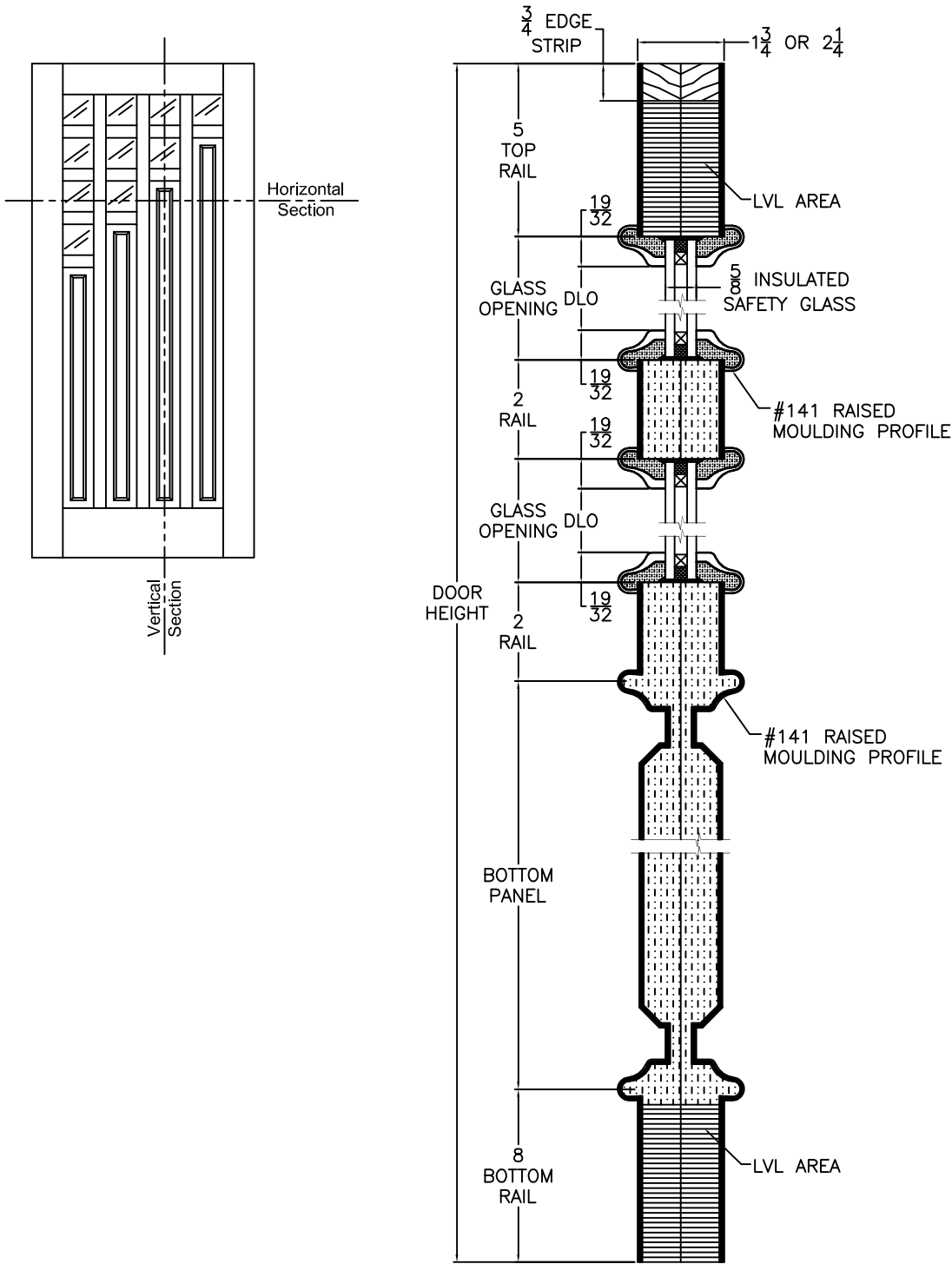
A401 CROSS SECTIONS

Scale: 3" = 1'-0"

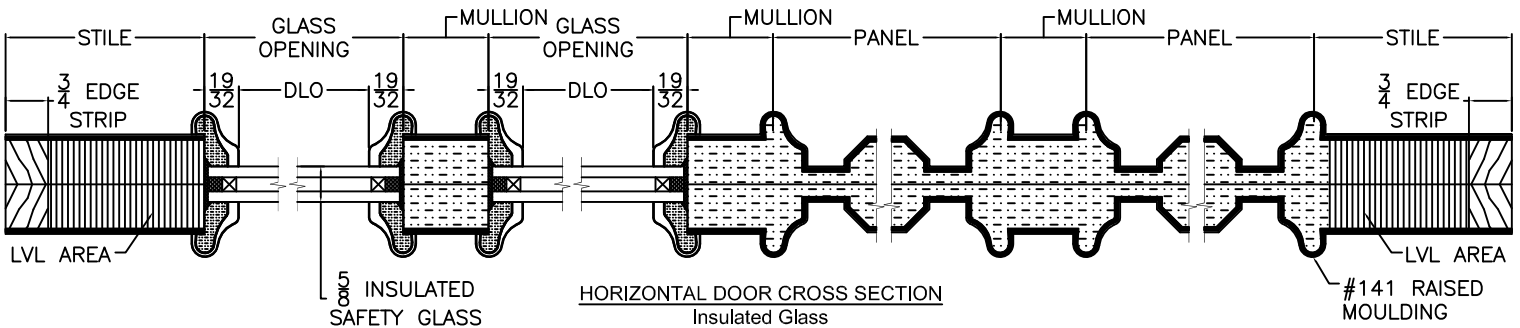


A800 CROSS SECTIONS

Scale: 3" = 1'-0"



VERTICAL DOOR/SL GLAZED CROSS SECTION
Insulated Glass



HORIZONTAL DOOR CROSS SECTION
Insulated Glass