



Thank you for selecting JELD-WEN products. Attached are JELD-WEN's recommended installation instructions for retractable screens. Retractable screens are designed to fit Builders, Sierra and 400 Series Vinyl Sliding Patio Doors.


Read these installation instructions thoroughly before beginning. They are designed to work in most existing applications. However, existing conditions may require changes to these instructions. If changes are needed, they are made at the installer's risk. For installations other than indicated in these instructions, contact a building professional.

IMPORTANT INFORMATION

If any door uses the following accessory trim pieces the screen cannot be attached.

- Drip Cap
- Stucco Trim
- Flush Fin adapter
- Brickmould adapter

Failure to install screens onto a square, level, and plumb patio door could result in denial of warranty claims for operational or performance problems.

Estimated Install Time	<input type="text"/>	First Time: 1 hr	
	<input type="text"/>	Experienced: ½ hr	

SAFETY

- Retractable screens are not intended to provide security or provide for the retention of objects, animals, or persons within the interior.
- Wear protective gear (e.g. safety glasses, gloves, ear protection, etc.).
- Operate hand/power tools safely and follow manufacturer's operating instructions.
- Use caution when working at elevated heights.

IF INJURY OCCURS, IMMEDIATELY SEEK MEDICAL ATTENTION!

GLOSSARY

Accessory groove

A groove in the exterior face of the patio door frame used to attach accessory trim pieces.

Interlock

A weatherstrip component that runs vertically along the stiles of either horizontal sliding sashes or sliding patio door panels. When the window/door is closed, the interlocks engage, locking together, to create a weather barrier.

Pilot hole

A drilled hole that is no larger than the body of the screw (minus the threads).

INCLUDED PARTS & NEEDED TOOLS

INCLUDED PARTS

- A Screen housing and weatherstrip
- B Screen tracks
- C Groove filler shim
- D Track end caps
- E Handle set
- F Magnetic catch assembly
- G Strike plate and mount

Items not shown:

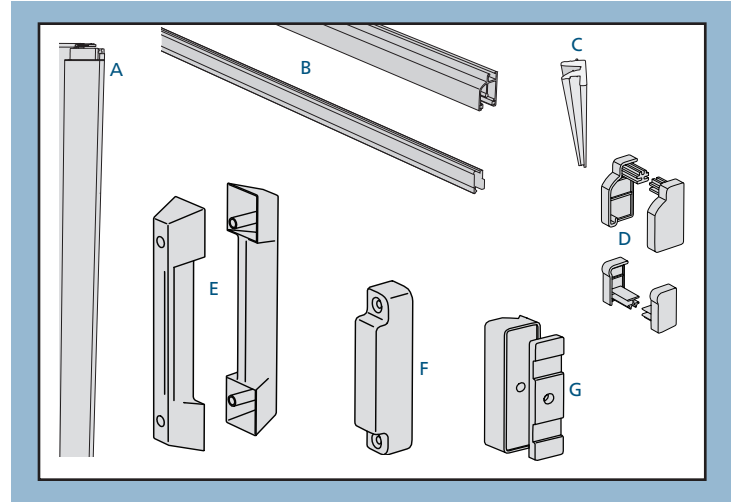
- 3" flat head screws
- 1 3/4" pan head screws
- 3/4" mill finish flat head screw

NEEDED TOOLS

- Tape measure
- Phillips screwdrivers
- Drill with bits and drivers (optional)
- Scissors

60" DOOR INSTALLATIONS

- Hacksaw
- Metal file
- Drill



REMOVE PACKAGING & INSPECT PATIO DOOR

- Cosmetic damage
- Correct product size. Fits either doors sized 72" x 80" or 60" x 80".
- Verify the patio door is square. The diagonal measurements should be the same. Maximum allowable deviation from square is 1/8".

- Make sure there is a flat surface on the door frame to mount screen, tracks and magnetic catch.
- Correct any deviations before installing the screen.

1

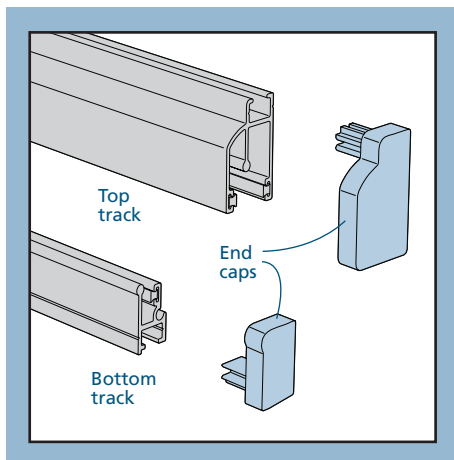
CUT & PRE-DRILL TRACKS - IF APPLICABLE

Note! Tracks are sized for 72" x 80" doors and will need to be cut to fit 60" x 80" units. Installations of 72" x 80" units can skip to section 2, "INSTALL TRACKS."

CUT TRACKS

Note! The cut end of the tracks will vary based on the handing of the door. When cutting the tracks, it is recommended to cut the end that will be at the jamb, or opposite the screen housing because it will later be covered with an end cap.

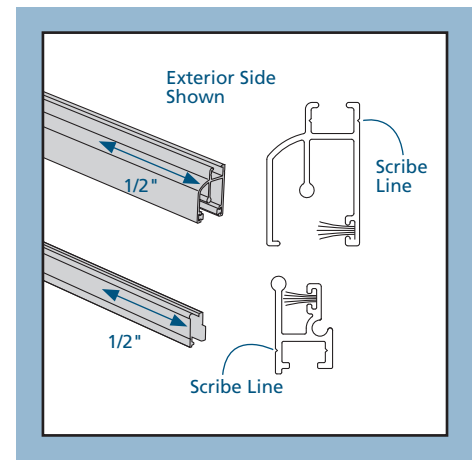
1. With a hacksaw, cut 6" off of the jamb end of the top track and file any rough edges smooth.
2. The bottom track has a pre-drilled hole in the center. To keep the hole in the center, cut 3" off of each end.
3. Place an end cap on the exposed jamb end of each track.



PRE-DRILL TRACKS

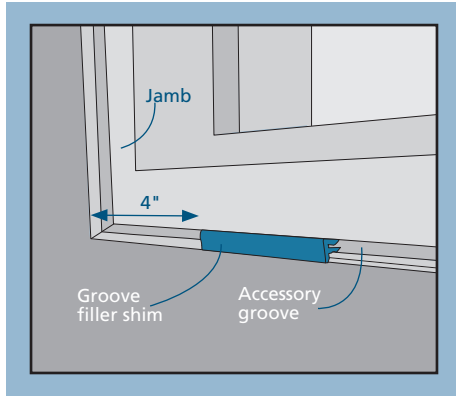
Note! Laying the tracks on a scrap piece of wood will make it easier to drill through both sides of the track.

1. Measure 1/2" from the cut ends of top and bottom tracks and mark on the scribe line.
2. Drill a 5/32" hole through both sides of the tracks at each mark.

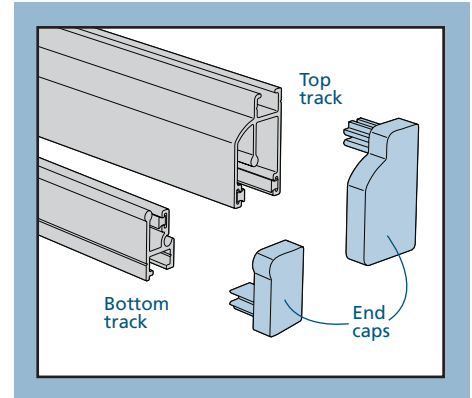


2 INSTALL TRACKS

1. Snap one groove filler shim into the accessory groove 4" from the jamb and 4" from the interlock. The extended leg of the shim should be facing downward and even with the bottom of the sill.
2. Place an end cap on the jamb end of each track. Align the end cap with the exterior of the door frame.
3. Hold firmly in place until installation is complete.
4. Using the pre-drilled holes in the track as a guide, drive a 1 3/4" pan head screw into the accessory groove at the jamb end and center of the bottom track. Do not over-tighten screws.
5. Snap groove filler shims into the head of the vinyl frame in the same manner as the sill.

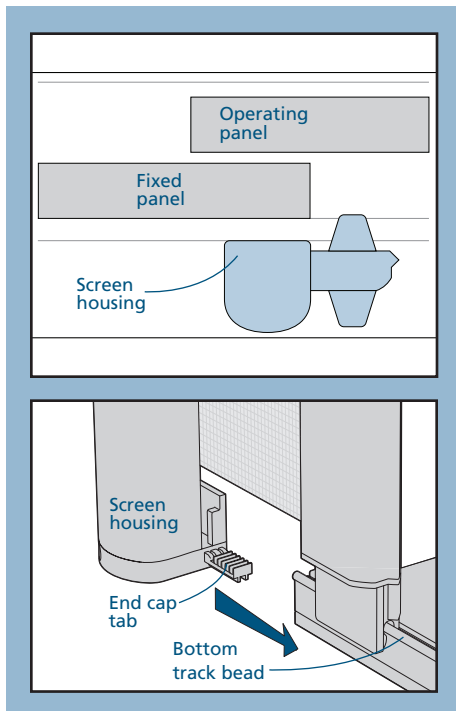


6. Align top track end cap with the exterior of the door frame.
7. Using the pre-drilled holes in the track as a guide, drive a 1 3/4" pan head screw into the accessory groove at only the jamb end. The screen housing end should remain unsecured until the housing is installed.

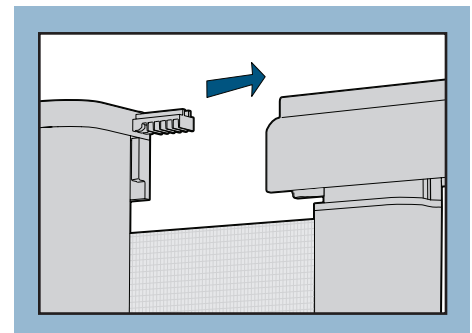


3 INSTALL SCREEN HOUSING

1. Position screen housing over the interlock next to track ends with the end cap tabs toward the screen tracks.
2. Trim the weatherstrip on the bottom so that it will fit over the frame and allow the screen housing to be flush with the bottom of the sill.
3. Align the bottom end of the screen with the bead on the bottom track and slide the screen onto the track.
4. Slide the housing end cap tab into the track until the housing is against the track.



5. Repeat for the top track.
6. Using the screen housing holes as a guide, drive the 3" screws into the accessory groove in the head and sill of the door frame.
7. Secure the screen housing end of both tracks with 1 3/4" pan head screws. Do not over-tighten screws.



4

COMPLETE INSTALLATION

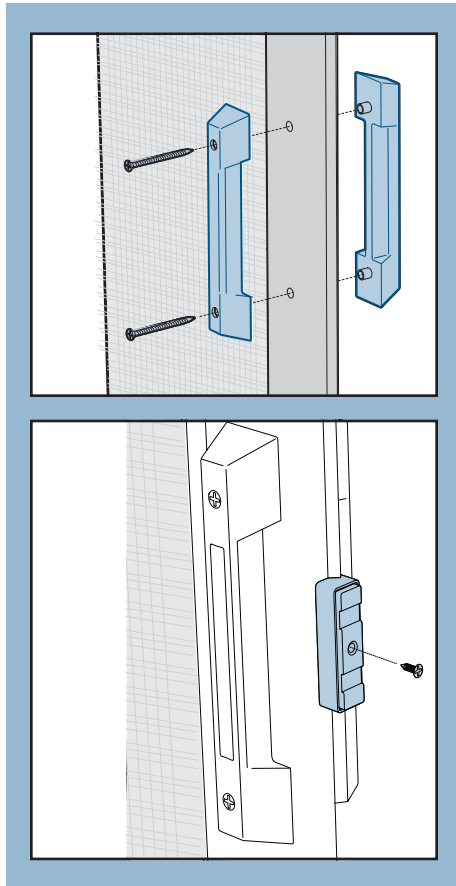
1. Install handles with the 1 3/4" screws; screw heads should be toward the interior. Do not over tighten the screws because the handles may crack.

2. Place strike plate on strike plate mount with the two notches in the plate facing out.

Note! If more magnetic attraction force is needed, the plate can be flipped over.

3. Secure with the 3/4" mill finished flat head screw.

4. Center magnetic catch on strike plate and connect.

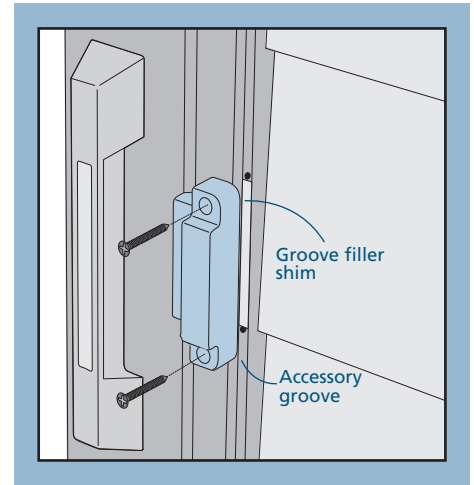


5. Extend screen all the way open until magnetic catch holes align with the accessory groove on the door jamb.

6. Using the holes in the magnetic catch as a guide, mark hole locations on accessory groove. The screen may now be retracted to simplify magnetic catch installation.

7. Insert a groove filler shim in the accessory groove between the marks.

8. Secure catch with two 1 3/4" pan head screws.



Please visit jeld-wen.com/resources for warranty and care and maintenance information.

Thank you for choosing

